

Smart Notes



What are the main differences between Thermo Scientific General Purpose Pro versus General Purpose Plus Centrifuges?

Thermo Scientific™ General Purpose Pro Centrifuges are designed to address the full sample and protocol flexibility of a customer that switches between different protocols and samples and needs a more discreet control of their centrifuge. General Purpose Pro centrifuges are equipped with a full color touchscreen interface, whereas General Purpose Plus Centrifuges are equipped with a classic LCD display and can address a more limited amount of customer needs.



Thermo Scientific Pro Centrifuge

Thermo Scientific General Purpose Pro Centrifuges include touch screen options for efficient programming and faster results. They are ideal for applications requiring more flexibility, speed and programming. A wider array of rotor choices, higher speeds and up to 100 stored programs ensure compatibility with a wide array of protocols, even across multiple applications. Versatility and unparalleled processing performance with constant focus on improved safety and durability.



Thermo Scientific Plus Centrifuge

Thermo Scientific™ General Purpose Plus Centrifuges are designed for mid-performance needs of basic research and clinical applications, often requiring repetitive and consistent protocols. With a focus on quality, throughput and reliability, they provide a robust solution to less technical applications. Safe, simple, comfortable operation with optimized performance, innovative design and enhanced ergonomics.

Feature comparison

Centrifuge features	General Purpose Pro Centrifuge	General Purpose Plus Centrifuge
Screen	Full color touchscreen	LCD display
No. of programs	100 Programs with the ability to do step programming	6 Programs
Speed	Speed increments in 1 RPM	Speed increments in 100 RPM
G-force	G-force increments in 1 x g	G-force increments in 100 x g
Time setting	Time setting is possible in HH x MM x SS format, continuous and ACE modes	Time setting is possible in HH x MM format as well as continuous mode
Time control	At start of the centrifugation run and at speed	At start of the centrifugation run
Pulse button	Duration of pulse centrifugation is customizable	Duration of pulse centrifugation is fixed
Number of rotors	16 optional rotors for 1.6 L versions and 17 optional rotors for 4 L versions	12 optional rotors for 1.6 L versions and 11 optional rotors for 4 L versions
Bucket selection	Selection is based on the description of the bucket shape, as well as complete product number	Selection is based on the 4 last digits of the product number
Error message	Error code is explained in direct action steps for the user	Error is shown as a code together with the brief description of the situation
Data logging	All data about the centrifuge and its runs are stored on the device and can be accessed through the Health Status Button	External logging in lab journals
Data extraction	Through the USB Port conveniently located on the front of the device	RS232 port
Centrifuge access	2 modes of centrifuge access: open and secure	Open mode of access

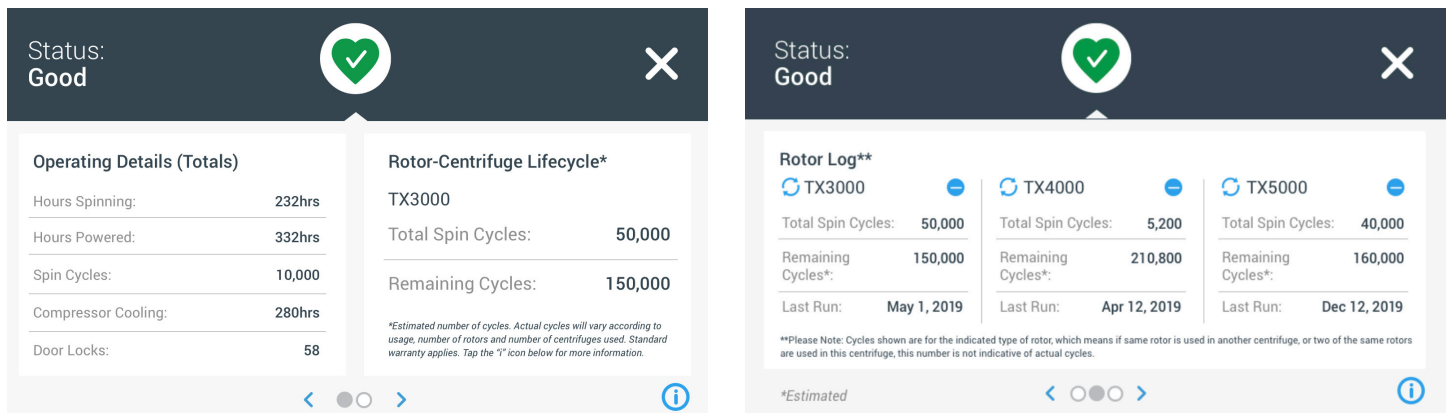


Figure 1: Centrifuge Health Status button gives a complete overview on centrifuge and rotors status

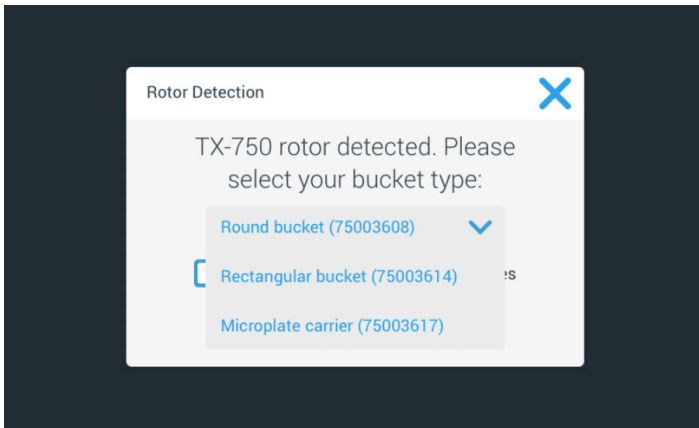


Figure 2: Example of buckets selection for the swinging buckets rotors

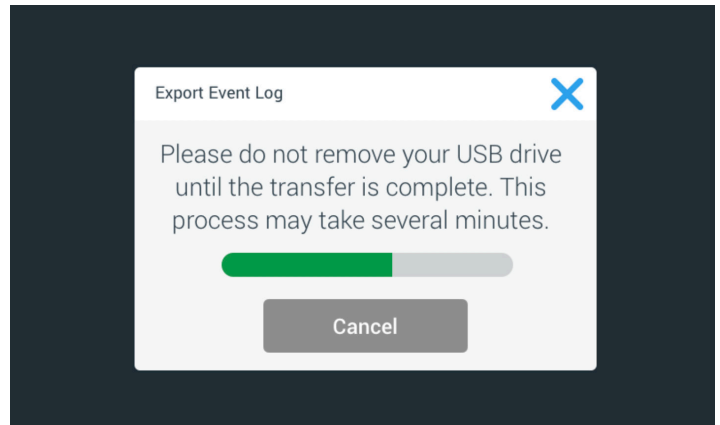
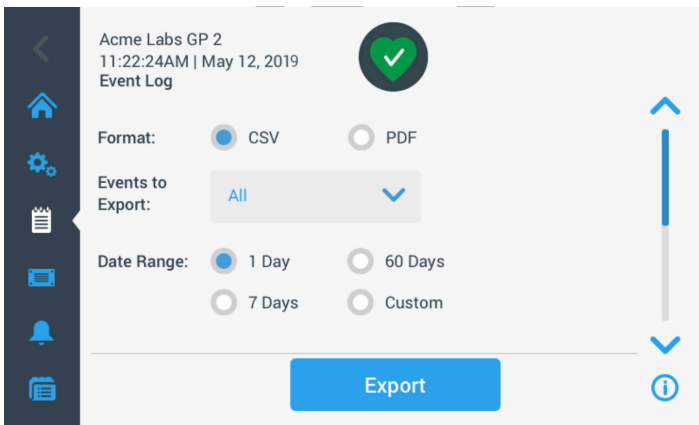


Figure 3: Through the USB Port that is conveniently located on the front of the General Purpose Pro device customers can extract data about centrifuge health status, log of alerts, as well as information about each run.

Summary

Thermo Scientific General Purpose Centrifuges are designed to meet the needs of various applications. Our centrifuges stand out for their performance, reliability, consistency and safety. Whether performing clinical protocols, cell culture procedures, microplate processing, or anything in between, Thermo Scientific centrifuges fulfill a variety of separation needs.

Find out more at thermofisher.com/gp-pro-centrifuge